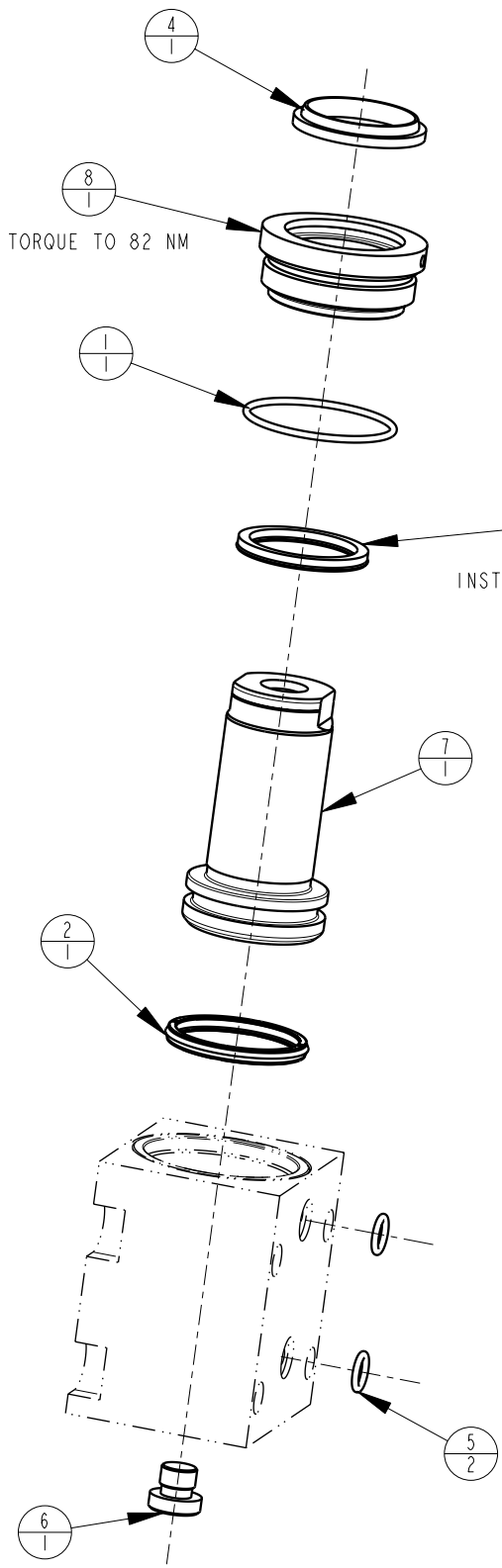



MODEL NO.			MODEL NAME
42112006			ASSY,CYL, BB, MM, 39,9KN, 25,5 STRK,DA
NO.	QTY	PART NO.	DESCRIPTION
1	1	39001013	O-RING, (-029)
2	1	39011031	SEAL,CROWN,1-5/16x1-1/2x5/32
3	1	39011048	SEAL, LL, (1-1/8 X 1/8 X 1/8 X 1-3/8)
4	1	39050020	WIPER,SNAP-IN, (1-1/8)
5	2	39050042	O-RING, (-011)
6	1	43068004	PLUG, 1/8 BSPP
7	1	48011501	METRIC PISTON, CYL., 25,5 STRK., 39,9 kN
8	1	82031501	GLAND, CYL, 8800 & 39.9 KN
N/A	N/A	60210402	KIT, SEAL, BB, 39,9 KN, DA
N/A	N/A	6V210201	KIT, SEAL, BB, 8800/39,9 KN, DA, FKM



2. ALL SEALS, O-RINGS, AND WIPERS ARE INCLUDED IN THE STANDARD OR FKM SEAL KIT.
1. APPLY LUBRICANT TO ALL SEALS PRIOR TO ASSEMBLY (DO NOT USE SILICONE TYPE LUBRICANTS).

NOTE:

PARTS LIST	 VEKTEK <small>VEKTEK, INC. 1334 E. SIXTH AVE. P.O. BOX 625 EMPORIA, KS. 66801 U.S.A.</small>			
	PARTS LIST, BB, MM, 39,9 KN, DA			
ASSEMBLIES AFFECTED 42-1120-06	<table border="1"> <tr> <td>SIZE A</td> <td>MPLV2164</td> <td>REV B</td> </tr> </table>	SIZE A	MPLV2164	REV B
SIZE A	MPLV2164	REV B		

B	2625	RELEASE	GAR	2/28/14
REV	IN ACCORDANCE WITH ECN	EFFECTIVE DATE	REVISED BY	DATE
DRW BY:	G. ROMINE	DRAWING STATUS: Released		
DATE:	11/19/07	PRODUCTION APPROVED FOR RELEASED STATUS ONLY		

SHEET 1 OF 1